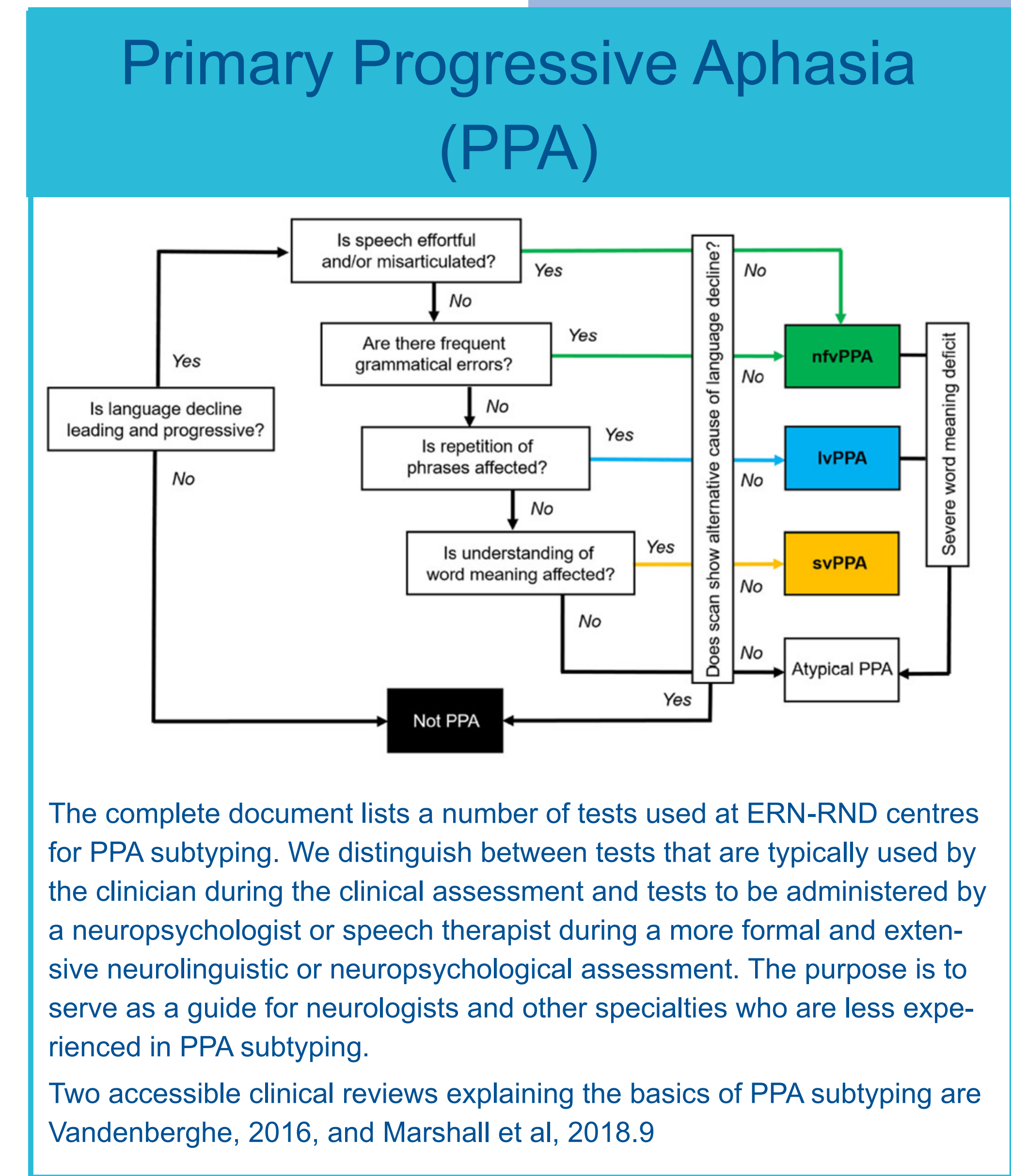
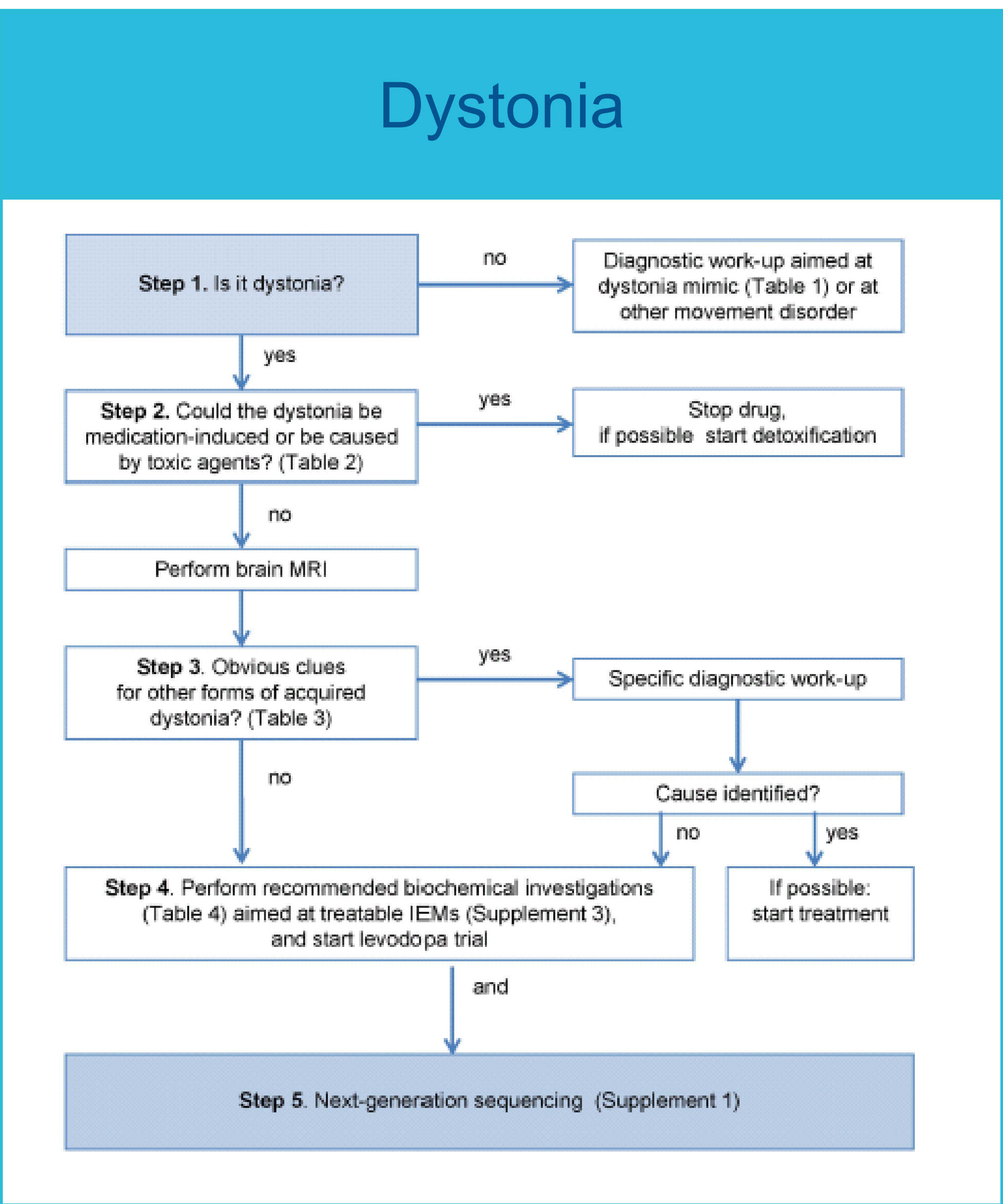
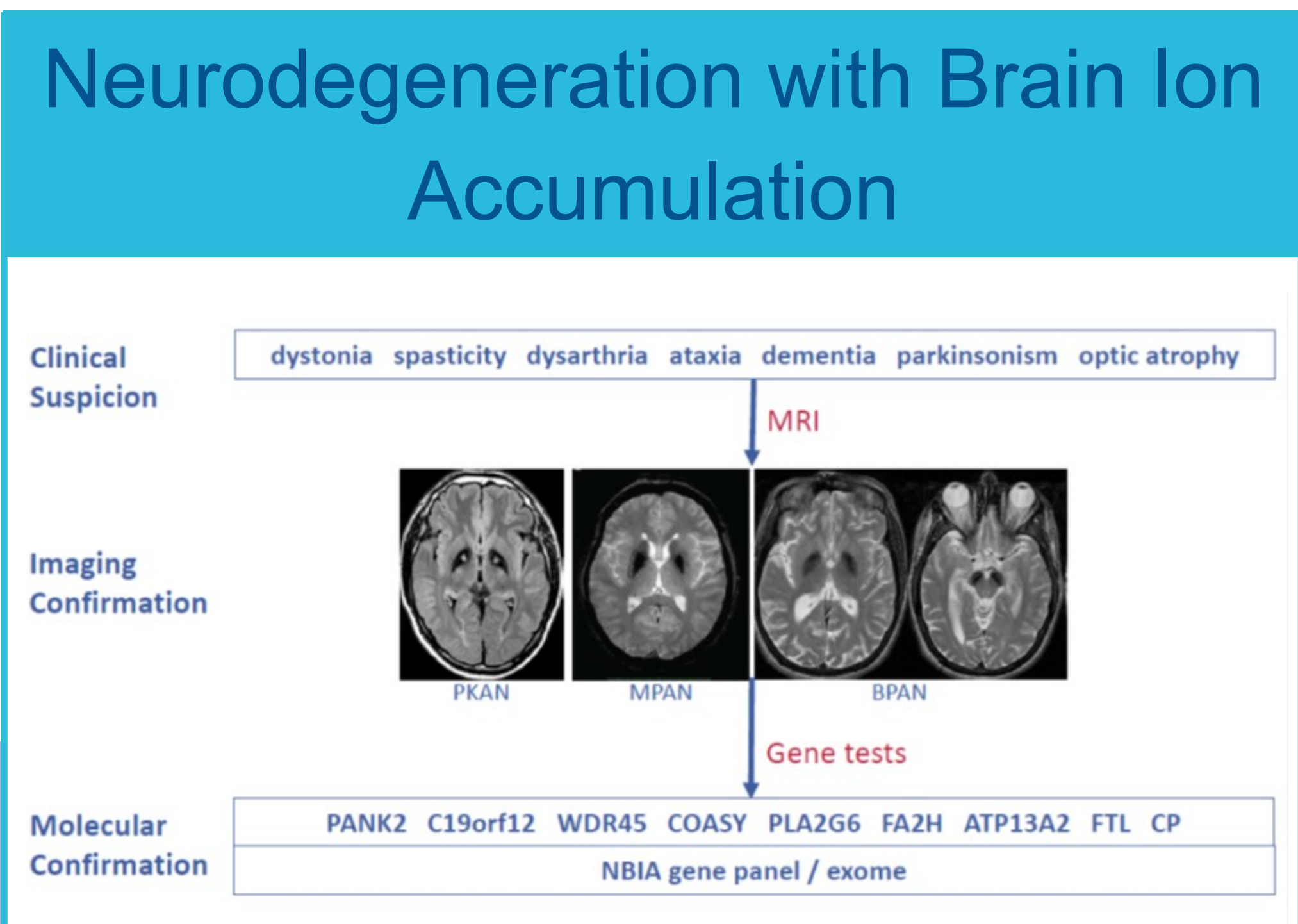
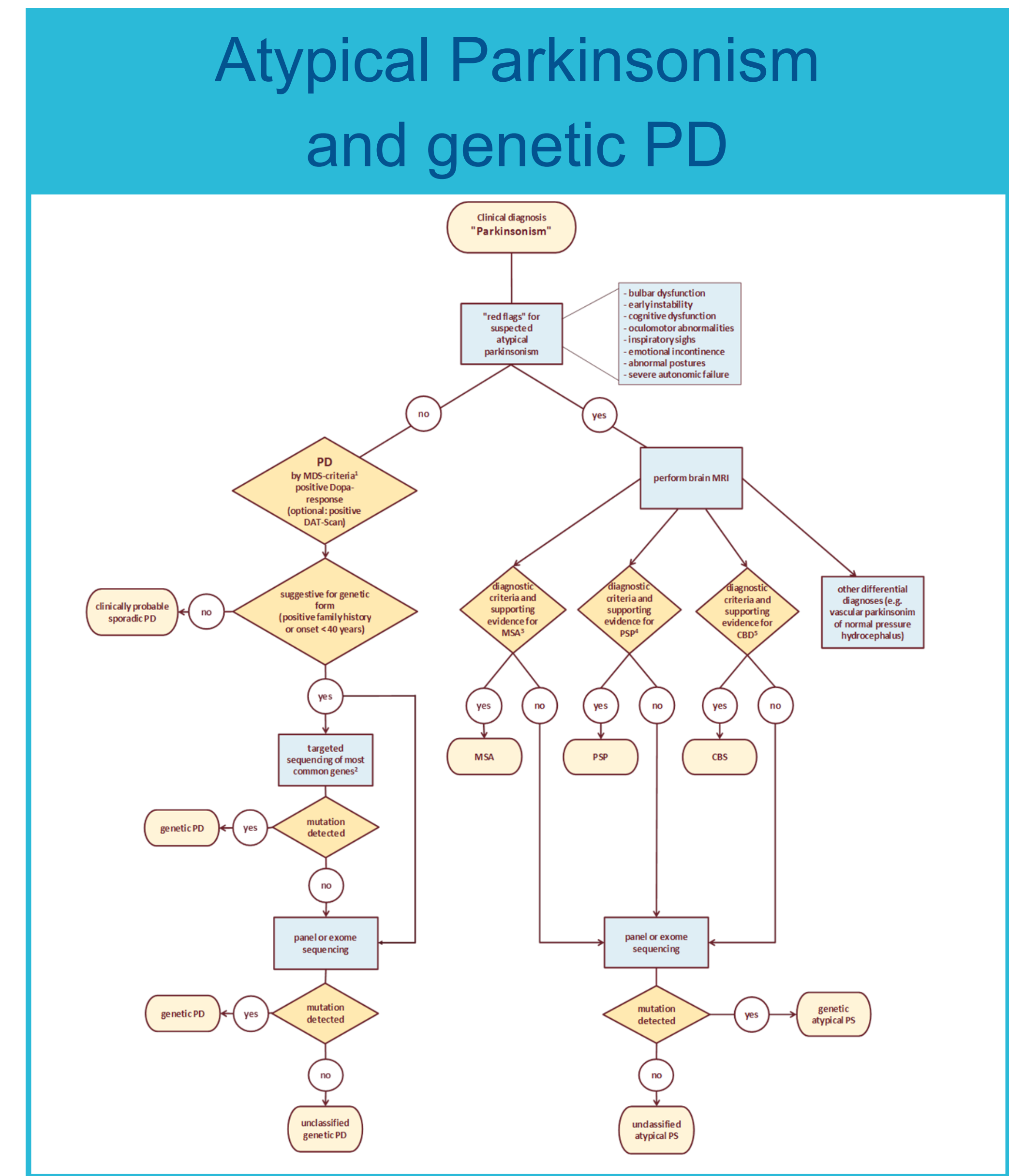


# Diagnostic flowcharts

a tool to disseminate expert knowledge on rare neurological diseases

Authors: Carola Reinhard<sup>1\*</sup>, Thomas Gasser<sup>2</sup>, Wassilios Meissner<sup>3</sup>, Alberto Albanese<sup>4</sup>, Thomas Klopstock<sup>5</sup>, Marie Vidailhet<sup>6</sup>, Isabelle Leber<sup>7</sup>, Jonathan Rohrer<sup>8</sup>, Rik Vandenberghe<sup>9</sup>, Odile Boespflug-Tanguy<sup>10</sup>, Ingeborg Krägeloh-Mann<sup>11</sup>, Nicole Wolf<sup>12</sup>, Alexandra Dürr<sup>5</sup>, Ludger Schöls<sup>2</sup>, Holm Graessner<sup>1</sup>  
on behalf of the ERN-RND network

<sup>1</sup>Institute of Medical Genetics and Applied Genomics, University Hospital Tübingen and Centre for Rare Diseases Tübingen, Germany | <sup>2</sup>Centre of Neurology, University Hospital Tübingen and Centre for Rare Neurological Diseases Tübingen, Germany | <sup>3</sup>French Reference Center for MSA, University Hospital Bordeaux and University Bordeaux, France | <sup>4</sup>Department of Neurology, Humanitas Research Hospital, Milan, Italy | <sup>5</sup>Dept. of Neurology, Friedrich Baur-Institute, University Hospital Munich, Germany | <sup>6</sup>Assistance Publique-Hôpitaux de Paris, Reference Centre for Rare Diseases 'Neurogenetics', France | <sup>7</sup>Assistance Publique-Hôpitaux de Paris, Reference Centre for Rare Dementias, France | <sup>8</sup>University College London Hospitals, UK | <sup>9</sup>University Hospitals Leuven, Belgium | <sup>10</sup>Assistance Publique-Hôpitaux de Paris, Reference Centre for Leukodystrophies, France | <sup>11</sup>Department for Neuropediatrics, University Hospital Tübingen and Centre for Rare Diseases Tübingen, Germany | <sup>12</sup>VU University Medical Center Amsterdam, Netherlands



## ERN-RND roll-out concept for Diagnostic Flowcharts

- Mapping of existing diagnostic flowcharts and algorithms
- Consent on diagnostic flowchart for the different disease groups
- Apply consented diagnostic procedure across ERN-RND
- Follow-up activities needed for reaching consensus and possibly as basis for diagnostic guideline
- Proposal to all ERN-RND centres to implement flowcharts
- Dissemination of ERN-RND endorsed flowcharts to clinicians in Europe (website, newsletter, ...)

## ERN-RND Disease Groups

- Ataxias and Hereditary Spastic Paraplegias
- Atypical Parkinsonism and genetic PD
- Dystonia, Paroxysmal Disorder and Neurodegeneration with Brain Ion Accumulation
- Frontotemporal Dementia
- Huntingtons' Disease and other Chorea
- Leukodystrophies