

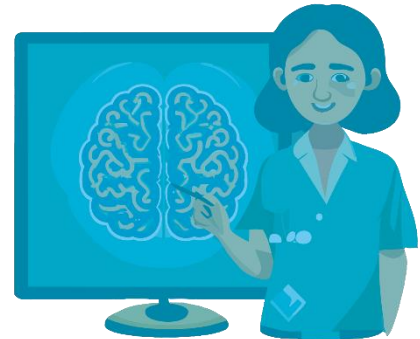
CROSS-BORDER HEALTHCARE PATHWAY NEURORADIOLOGY ADVICE

Neuroradiology Advice

Standard pathway for cross-site neuroradiology expert advice for diagnostic and management decisions in Rare Neurological Diseases.

This offer is exclusive to the members, affiliated and supporting partners of ERN-RND.

It allows to receive a second opinion on imaging findings of any RND case as a basis for individual recommendations for diagnostic and management strategies to optimize patient care.



How do you receive cross-site neuroradiology expert advice for any patient who you think might benefit from a second opinion?



1. Contact CPMS helpdesk

They will propose a meeting date & support you with data upload in CPMS

Email cpms-helpdesk_ern-rnd@med.uni-tuebingen.de



2. Share data via CPMS

Enroll your patient in CPMS & upload MRIs. Add relevant clinical details.

Important: Upload complete studies in DICOM format > 2 weeks prior to meeting date



3. The experts view your case in CPMS

They will prepare for & attend the meeting.

Additional data may be required! CPMS helpdesk will be in touch with you.



4. Join the videocall

The treating Neurologists & Neuroradiologists from your center should join.

In the call, you will be asked to quickly present your case, bringing everyone on the same page. The experts will then ask questions and share their opinions.



5. Give feedback & close your case in CPMS

Was the consultation a success?

Not (fully) successful (yet)? We are happy to convene a second meeting with you.

Who Provides this Service?



Project Coordinator
Eva Bültmann
Neuroradiology expert



Project Coordinator
Alexander Münchau
Movement disorder specialist



ERN-RND specialists
Invited case-by-case
e.g. Geneticists, psychologist...



CPMS helpdesk
Alisa Jemelka
Organisational & technical support



CPMS helpdesk
Tamara Martin
Organisational & technical support